

Visit Our Website at [www.usindustrial.com](http://www.usindustrial.com)

Thank you for the opportunity to quote. We are pleased to offer the following equipment for your consideration:

**NEW – U.S. Industrial Model USG1224-SY TOOLROOM SURFACE GRINDER as configured below:**

*Description: This is a medium duty toolroom Surface Grinder with hydraulic reciprocation of table and electric motor power increment setting for crossfeed. There is power elevation to spindle. Grind depth is manually set by operator. This is a TWO-AXIS Automatic Surface Grinder*

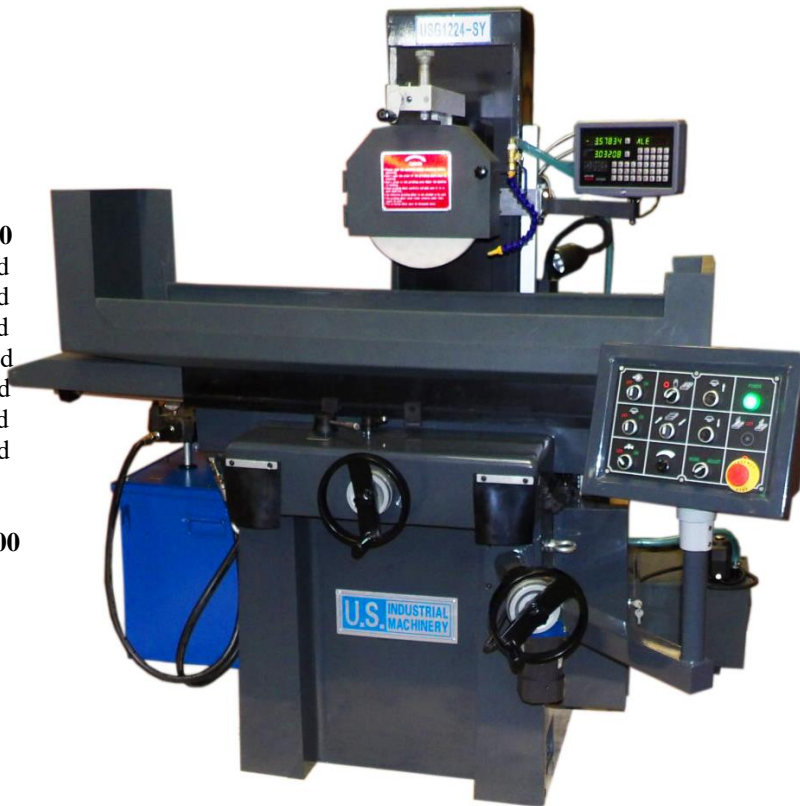
Standard Equipment:

- Grinding wheel
- Balancing base and arbor
- Over wheel dresser w/diamond
- Manual one-shot lube
- Permanent Magnetic Chuck: 11.8" x 23.6"
- Wheel flange
- Toolbox and tools
- Coolant system
- Sino Two-axis digital readout

Model USG1224-SY.....	\$ 25,990.00
Semi Fine Pole Permanent Chuck, 11.8" x 23.6".....	Included
Wet coolant system.....	Included
Sino two axes DRO installed.....	Included
Hydraulic reciprocation of table.....	Included
Electric motorized crossfeed.....	Included
Power elevation to spindle.....	Included
Overwheel (Parallel) diamond dresser.....	Included

**TOTAL PRICE.....F.O.B. Memphis, TN.... \$ 25,990.00**

**Voltage is 220 or 440 Volts, 3 phase, customer choice.**



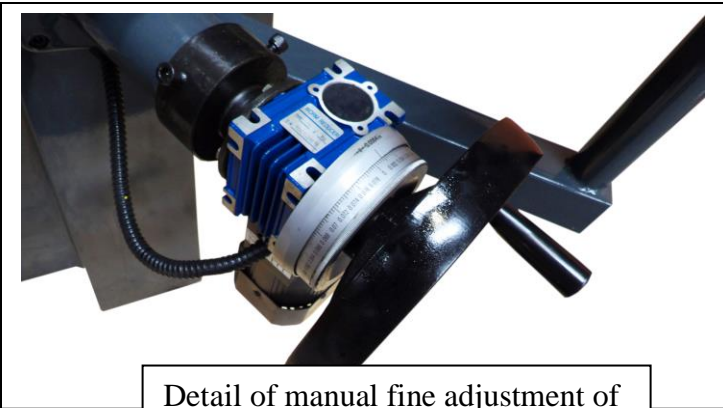
MAIN SPECIFICATIONS

Parallelism & Flatness Accuracy: .....	<0.0008"
Max. Travel (Longitudinal x Cross): .....	24.8" x 12.6"
Max. Distance Spindle Center To Table:.....	20.5"
Max Grinding Wheel (ODxTxID):.....	300mm x 76.2mm x 30mm
(Supplied with one 12" x 1-1/4" grinding wheel)	
Grinding Wheel speed:.....	1680 rpm
Spindle Motor:.....	3 HP
Hyd. unit Motor.....	3 HP
Machine weight.....	3,400 lbs (Gross Shipping)
Dimension, crated for shipping.....	56"W x 72"L x 76"T

Page 2 – USG1224-SY Surface Grinder

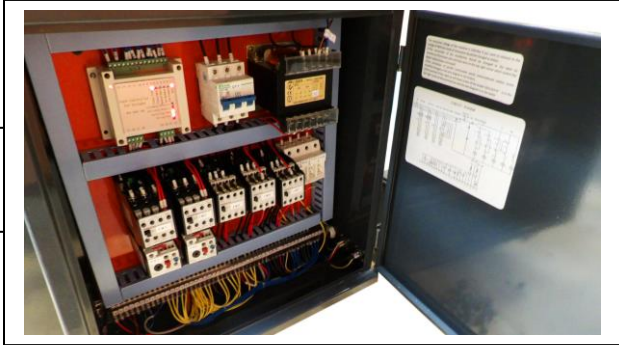


Detail showing permanent magnetic chuck, over wheel diamond dresser, 2-axis digital readout display, flood coolant nozzle



Detail of manual fine adjustment of downfeed with 0.0004" graduations. Wheelhead Elevation Motor shown.

Detail showing electrical cabinet, with disconnect and fuse holders.



Detail showing control panel with reciprocation and electric motor table crossfeed control selection. Also with motorized wheelhead elevation.



Thank you for the opportunity to quote. We look forward to serving you.

Sincerely,

U. S. Industrial Machinery

October 2021